



Innovation
that excites

NISSAN LEAF

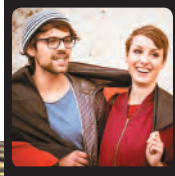
Zero Emission



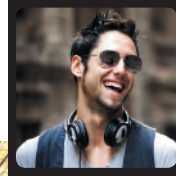
**DISCOVER THE FLUIDITY
OF NISSAN LEAF.**

A wave of positive energy,
an exhilarating ride. Discover
the fluidity of NISSAN LEAF.
Charge at home or on the go,
control your LEAF with your
smartphone and delight in the
uncompromising comfort and
unexpected power of
a genuine game-changer.
The future just got real.

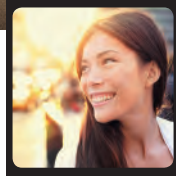
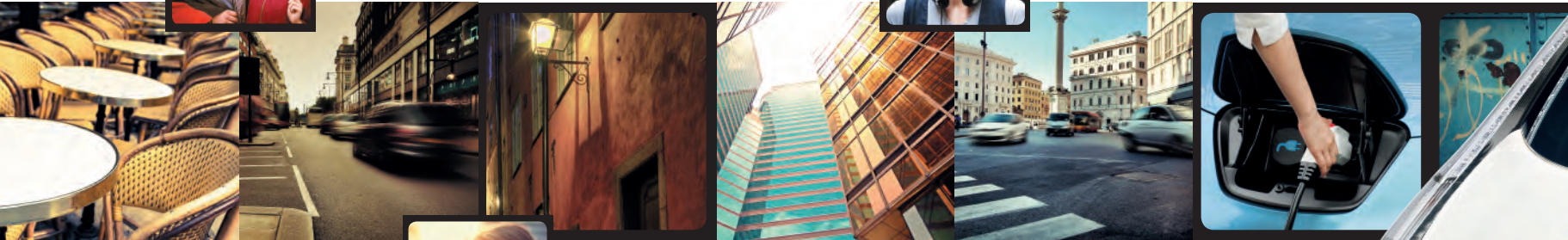




"I love the LEAF because it's the cheapest car to run of ANY car I've EVER owned."



"I bought my LEAF as a Second car. I now drive it 95% OF THE TIME."



"NissanConnect EV is very cool. I warm up my LEAF every morning without leaving the breakfast table!"



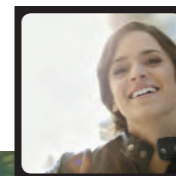
SPREAD THE WORD

IT'S SURPRISING what you can do without a tailpipe. Chisel your look, raise your profile and share Nissan LEAF with your friends. Instantly likeable, over 90% of owners say they're satisfied and 96% recommend it!

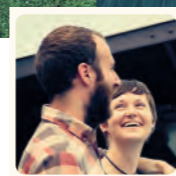


DRIVE FOR CHANGE

IT MAY LOOK FAMILIAR, but it's revolutionary inside. It is packed with innovation to deliver up to 250km* driving range according to NEDC cycle. An all-electric hi-tech eco-warrior right down to the tip of its aerodynamic nose, Nissan LEAF is the smart choice.



"I have absolutely no idea what the price of a liter of petrol is."



"The car is saving me tons of money on petrol and maintenance, and electric costs are minimal."



"I knew the LEAF would be energy efficient; I didn't expect it to be so much fun to drive."



*pending NEDC homologation



CHECK IN
Check in Nissan LEAF's 370L boot space is among the top of its car category/ Even with the Bose® Sound System on LEAF SVE, you can load up to 355L.

LOAD UP
And if you need more space the rear seats can even recline with 60/40 split.



ATTRACT THE CROWD

A FULL 5-SEATER offering adjustable height in the front and plenty of room in the back, Nissan LEAF is a real crowd-pleaser. It also offers you the luxury of cold pack, saving energy by keeping you warm instead of ambient air. Enjoy the heated seats and heated steering wheel. Decked out in a leather trim or in a planet-loving bio-fabric made from sugar cane, it's a renewable pleasure too.

COOL TECHIE TOOLS

DIGITAL DASHBOARD. Login to Nissan LEAF's control panel, dominated by a beautiful blue-lit combimeter and digital eyebrow display behind the wheel and a c-stack centrepiece complete with a 7" LCD screen for the rest of your data.



EV ANALYTICS

The combimeter helps you to maximize your range by displaying your instant energy consumption or regeneration, state-of-charge, remaining energy, capacity levels and distance-to-empty in easy-to-read percentage form. Note the difference when you switch from Drive mode to ECO mode – it's impressive!

DRIVE IN B-MODE

Flick the gear stick into B-mode and the high tech regenerative braking system will increase the energy recycled back into the power supply when you slow down.

360° VISION

Enjoy a clear view of your surroundings with the Around View Monitor parking aid. Four wide-angle cameras offer a front, rear and/or side view as well as a bird's eye view.

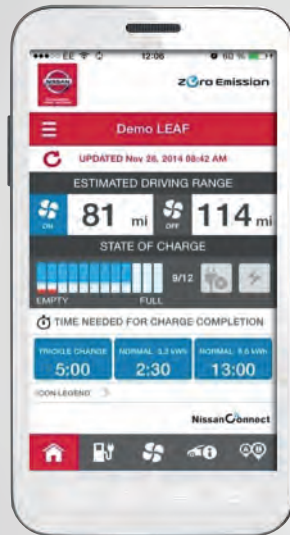
ECO-MODE

Switch to Eco mode to save even more energy and improve your range by as much as 10% – particularly if you're driving in town in a lot of stop/go traffic.



NISSANCONNECT EV

TALK TO YOUR LEAF IT LISTENS. NissanConnect EV makes the conversation possible, with a smartphone app that lets you keep in touch with your LEAF remotely. Which means you can ask it to do things like start charging or turn the heat on. And LEAF will even answer, like when it sends you a friendly message to let you know it's finished charging. You can also log on to NissanConnect EV on your laptop, where you'll discover more ways to make driving electric easy and fun. And don't forget to check your phone – that might be your LEAF calling.



FROM YOUR SMARTPHONE. With the available NissanConnect EV app, you can connect to your LEAF to start charging and activate climate control, see your driving range and get alerts and updates.¹



FROM YOUR COMPUTER. In addition to all that you can do from your phone, log into your NissanConnect EV account online to learn your driving history, plan your route and even see how your driving efficiency ranks among other LEAF owners.¹

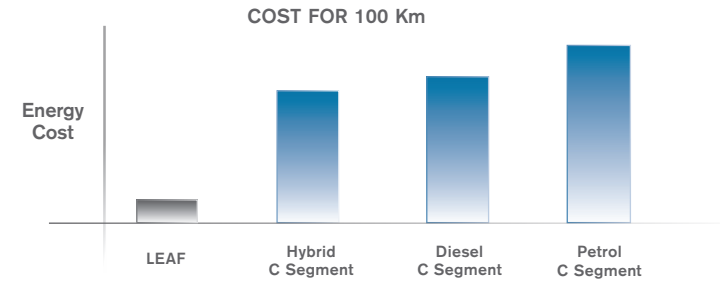


TAKE CHARGE NOW'S THE TIME

CHOOSE YOUR STATION. Stop for a quick charge en route, fill up at home or plug in at work and take advantage of the 250km* NEDC driving range the Nissan LEAF offers you.

*pending NEDC homologation

LEAF offers an extremely competitive cost of ownership package.



www.nissan-leaf.com



1. QUICK CHARGE STATION

30 MINS. Up to 80% in just half an hour: quick charge is the fastest battery boost in town! You can fill up at a quick charge station. Life is easier and trips are quicker.



2. HOME CHARGING UNIT

STARTING FROM 4 HOURS.

Battery	24 kWh	30 kWh
3.3 kw on-board charger	7 hours	9.5 hours
6.6 kw on board charger*	4 hours	5.5 hours

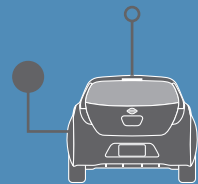
*optional, 32A charging times shown

*32A home charging not available in ROI

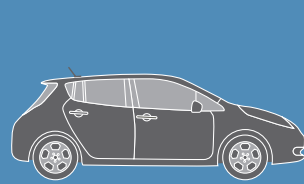


3. CABLE + DOMESTIC PLUG

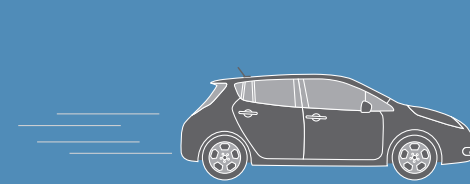
12-15 HOURS. Use a Nissan EVSE cable to charge your battery where you like – at public charging stations, at work, or at home. (only use up-to-date electrical installation). Providing 10A power, it will charge from empty to full in about 12 hours or 15 hours with 30 kWh battery. Maximum flexibility.



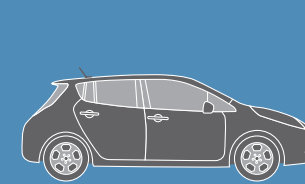
Wake up to a full tank. All charged up and remotely pre-heated or cooled, LEAF is ready for action.



Woosh! Nissan LEAF can go at 90 mph and has 100% available torque straight off the starting block.



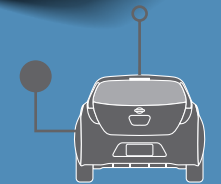
Get where you're going faster with single occupancy access to the carsharing lane. It's your reward for driving electric (select countries only).



Thanks to its regenerative brakes, Nissan LEAF charges everytime you slow down. Red lights are your new best friend.



Take that important call with Bluetooth®, then do those errands. The range indicator shows you've got 47 miles left to spare and two charging stations nearby. Handy that.



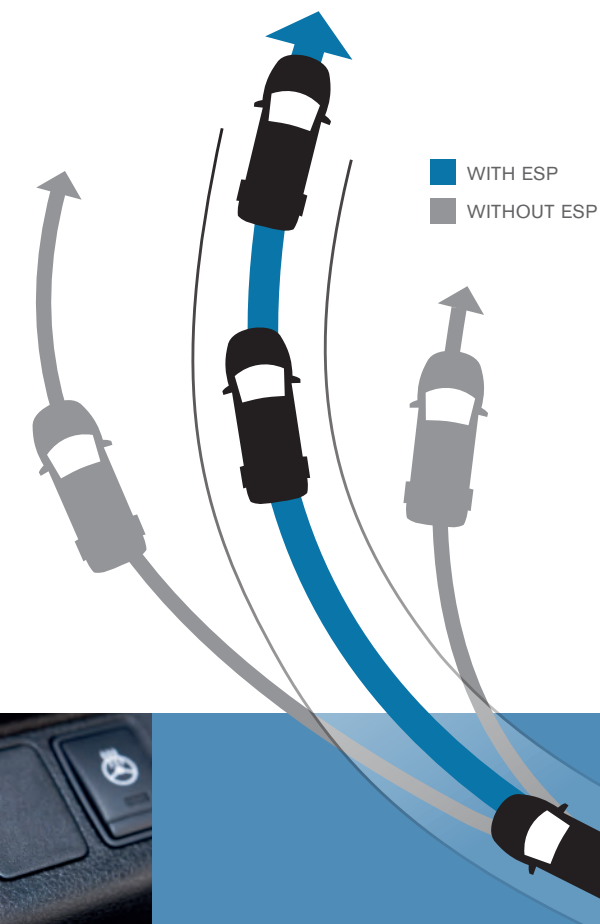
Just another lovely day driving electric. No gas, no emissions. Back home, time to charge up during off-peak hours while sleeping.



ARRIVE SAFELY

A PROTECTED ENVIRONMENT.

Naturally, Nissan LEAF is equipped with all the latest safety and security equipment.



AIRBAGS. Nissan's Advanced Airbag System includes dual-stage front airbags with seat belt sensors, front seat-mounted side impact airbags and roof-mounted curtain side impact airbags for front and rear seats.



AVM. The Around View Monitor helps you park safely and easily. Thanks to 4 wide-angle cameras, you can vision your surroundings from a variety of angles including front & side, back & side and from above.



LED LIGHTS. The xenon-like performance of Nissan LEAF's LED lights are designed to brighten up your darkest moments while using half the energy of halogens.



ESP. The Electronic Stability Program keeps you in control. It senses the car's handling limits and, if needs be, reduces engine power or applies select brakes to avoid wheel spin.

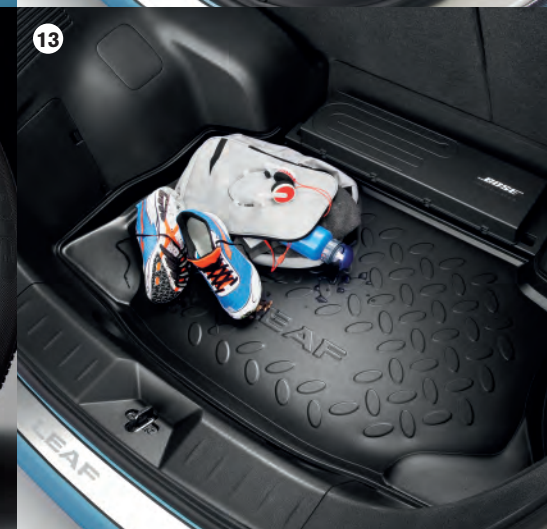
REASSURING ESP: Electronic Stability Program turns last-minute lane changes and rapid stops into a smoother operation and keeps you safer on your desired trajectory.



ADD A PERSONAL TOUCH

NISSAN GENUINE ACCESSORIES. From chrome accents to illuminations, nifty organisers to jazzy wheels, customize your LEAF to suit you.

- 1) Wind deflectors
- 2) Chrome mirror caps (over the existing mirror housings)
- 3) Chrome strip door sills
- 4) Chrome foglamp rings
- 5-7) Floor mats, 4pc



- 8) Illuminated entry guard
- 9) Charging port lid cover

- 10) Cargo organizer
- 11) Centre console inserts

- 12) 16" alloy wheel - ELECTRON
- 13) Soft trunkliner - exists in two sizes for LEAFs with and without Bose® Energy Efficient Services.

COLOURS

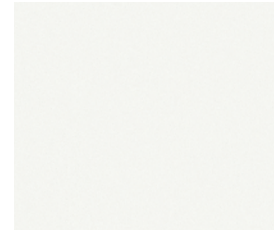
COLOUR YOUR ENERGY



Black metallic - **Z11**



Silver metallic - **KY0**



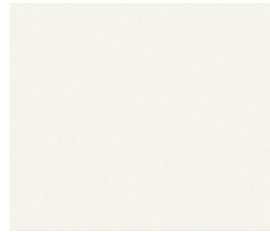
White solid - **326**



Gray metallic - **KAD**



Red Pearl metallic - **NAJ**



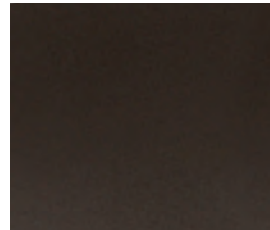
White Pearl - **QAB**



Solid Red - **Z10**



Sonic Blue - **RBE**



Bronze - **CAP**

WHEELS



XE_16" WHEEL COVER



SV_16" ALLOY



SVE_17" ALLOY

TRIMS

TAILOR YOUR TRIMS



BLACK
woven type fabric*
XE



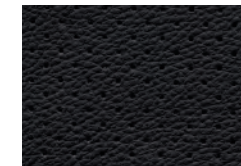
LIGHT GREY
suede fabric*
SV



BLACK
suede fabric*
SV

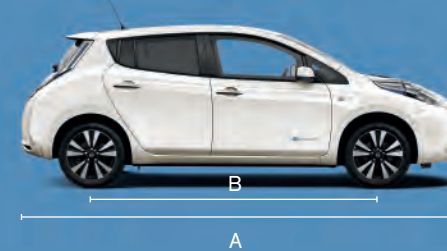


BLACK
leather
SVE



*Bio Fabric

DIMENSIONS



- A:** Overall length: 4,445MM
- B:** Wheelbase: 2,530MM
- C:** Overall width: 1,770MM
- D:** Overall height: 1,550MM



TECHNICAL SPECIFICATIONS

Battery kWh	24	30
Body	5 door hatchback	
Seats	5	
Grade	Visia, Acenta, Tekna	Acenta, Tekna

WEIGHTS	Kerb weight min/max VISIA	kg	1475 / 1511	N/A
	Kerb weight min/max ACENTA	kg	1493 / 1538	1516 / 1562
	Kerb weight min/max TEKNA	kg	1512 / 1547	1535 / 1570
	Gross Vehicle Weight	kg	1 945	1 970
	Maximum payload	kg	395	
	Maximum axle load front	kg	1 030	1 040
	Maximum axle load rear	kg	960	980
	Towing capacity	kg	N/A	
	Roof load capacity	kg	N/A	

OVERALL DIMENSIONS	Overall length	mm	4 445	
	Overall width with mirrors	mm	1967	
	Overall width w/o mirrors	mm	1 770	
	Overall height	mm	1550	
	Wheelbase	mm	2700	
	Overhang front	mm	960	
	Overhang rear	mm	785	
	Track front	mm	1540 / 1530	
	Track rear	mm	1535 / 1525	
	Minimum Ground Clearance	mm	160	
	Turning radius	m	5.2 / 5.4	
	Luggage capacity (VDA)	L	370 (std) / (355 BOSE)	
	Luggage capacity (until roof)	L	911.6 (floor to headliner)	
Max with folded seats (VDA)	L	720 (to top of seats)		

PERFORMANCE	Electricity consumption 3)	Wh/km	150	* pending homologation
	Autonomy (NEDC) 3)	km / miles	199 / 124	250 / 155 *
	Real life range measure	km	100 / 160	120 / 200
	CO ₂ mass emission (Combined)	g/km	0	
	Max. speed	km/h	144	* pending homologation
	Acceleration 0-100 km/h	sec	11.5	
	Min. turning circle (kerb to kerb) 16"	m	10,4	
	Min. turning circle (kerb to kerb) 17"	m	10,8	
	Coefficient of drag 16"		0,29	
Coefficient of drag 17"		0,28		

ENGINE	Engine code		EM57	
	Electric Motor Type		AC synchronous	
	Max. engine power 1)	kW (PS) / min-1	80(109) / 3008-10000rpm	
	Max. torque 1)	Nm / min-1	254 / 0-3008rpm	
	Max. RPM		10,500	
	Energy type		Electricity	

BATTERY	Type		Laminated lithium ion	
	Voltage	V	Nominal voltage ; 360 V	
	Capacity	kWh	24 kWh	30 kWh
	Number of cells		192	
	Battery charging	kW/Hr	3.6 kW/Hr	
	1hour charge to range	km	17	
	Battery charging	kWh	6.6 kW/Hr (option)	
1hour charge to range	km	32 (option)		

CHARGER	On-board charger	kW	3.3 kW/6.6 kW (option)	
	Quick charger capacity	kW	50 (option)	
	Charging cable		EVSE 6m & Mode 3 Type 2 32A	

DRIVE TRAIN	Clutch type (AT)		Automatic	
	Transmission code		RE1F61B	
	Gear ratio		Single Speed Gear Reduction	
	Final drive ratio		8.1938	
	Driven wheels		Front	

CHASSIS	Suspension front		Independent Mac Pherson strut	
	Suspension rear		Torsion beam axle	
	Steering		Electric power assisted	
	Braking system		Electrically Driven Intelligent Brake	
	Front brake		CLZ25VZA 296 x 26t	
	Rear brake		AD11 VE+DS17 292 x 16t	
	Stability control system		ESP (standard)	
	Wheel size 16" / 17"		6.5J 16 O/S:40 / 6.5J 17 O/S:45	
	Tyre size 16" / 17"		205/55R16 / 215/50R17	

www.nissan.ie/vehicles/leaf

Follow Nissan LEAF on:



Every effort has been made to ensure that the content of this publication is correct at the time of going to press (September 2015). This brochure has been produced featuring prototype vehicles exhibited at motor shows. In accordance with the company's policy of continuously improving its products, Nissan Europe reserves the right to change at any time the specification and the vehicles described and shown in this publication. Nissan dealers will be informed of any such modifications as quickly as possible. Please check with your local Nissan dealer to receive the most up-to-date information. Because of the limitations of the printing processes used, the colours shown in this brochure may differ slightly from the actual colours of the paint and interior trim materials used. All rights reserved. Reproduction in whole or part of this brochure without the written permission of Nissan Europe is forbidden.

This brochure is made from chlorine free paper – MY16 LEAF BROCHURE LHD 09/2015 – Printed in EU.
Created by CLM BBDO, France – Tel.: +33 1 41 23 41 23 and produced by eg+ worldwide, France – Tel.: +33 1 49 09 25 35.

Dealer stamp: